

Datasheet // LineLite series

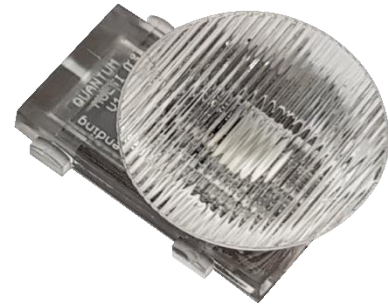
QUANTUM LINE 10x40 patent pending wireless technology

48V DC

The Stogger Quantum Line enables you to posterboxes and large surfaces in a new ground-breaking way. You no longer need to worry about wiring! The patent pending system enables the Quantum Line to be powered wirelessly through the LiteStrip, thus giving you ultimate flexibility.

Key Features

- Clickable wireless LED module for Edgelighting
- Patent pending technology
- Average beam angle 10x40 degrees
- Dramatically reducing LED assembly time
- No tools needed
- Superior lens design
- Cutting edge 48V high voltage, low current LED
- Industry leading efficiency >95%
- Ultra-high light output up to 147 lm/W
- Perfect for lightboxes up to 1,5 meter deep
- Temperature compensated light output to further extend life span



Technical specifications

Product code	Colour	CRI (Ra)	Voltage	Power	Current	Beam angle	Lum. flux	Weight/piece ¹⁾
P-13-2501	5700 K	>80	48V DC	1.1 W	23 mA	10x40 °	147 lm	2 gram
P-13-2502	3000 K	>80	48V DC	1.1 W	23 mA	10x40 °	119 lm	2 gram
P-13-2503	6500 K	>80	48V DC	1.1 W	23 mA	10x40 °	147 lm	2 gram
P-13-2504	2700 K	>80	48V DC	1.1 W	23 mA	10x40 °	119 lm	2 gram
P-13-2505	4000 K	>80	48V DC	1.1 W	23 mA	10x40 °	119 lm	2 gram

¹⁾ Weight including screw

Please note that 2700K, 5700K and 6500K is on stock. Stock of 5700K is the largest.

LED lifetime	TM21 life span: reported L70: > 54,000 hours @ 85°C
Dice technology	InGaN technology
Operating & storage temperature	-40 to 100 °C
Minimum advised LED pitch distance	60 mm

Power Supply

We guarantee 5-year good operation using 48V MeanWell power supplies from the HLG-xxx-48 series. We have CE-certified our wireless lighting system with these power supplies.

Maximum PowerSupply load: 100 Watt PSU = 100x Quantum Screw / 240 Watt PSU = 240x Quantum Screw

Safe and easy installation conform CE-legislation

To conform CE-legislation, we advise to use the Stogger SignFuse or SignController. Both have fast-acting, self-resettable solid-state fuses, which prevents overload and greatly reduces fire risks. The SignFuse or SignController is installed between the Power Supply and the PowerBoard. By using our wireless lighting system with these systems, the installed system conforms the CE-legislation.

Energy label

